



TWSE : 4163

Intai Technology Corp.

Aug. 2024

Agenda

- **Company Overview**
- **Product Categories**
- **Medical Device Market Analysis**
- **Financial Highlights**

Safe Harbor Notice

Except for historical information set forth herein, this presentation contains certain forward-looking statements that are subject to risks and uncertainties that could cause actual results to differ materially from what may be expressed or implied by such statements. Investors shall assess the potential impact of uncertainties and conduct risk control.

Company overview



Founded

2004/10



Chairman

CHAO-YUN CHUNG



Registered Capital

NT\$498 mn



HQ & Facilities

Taichung (Taiwan)



Products

Medical Devices
Precision Hardware
RF/Microwave
Switches



Employee

728人
(July 31, 2024)

Corporate Affiliate

Others:



Invested in Taiwan ~ Orthopaedic Devices

United States ~ Cardiovascular equipment



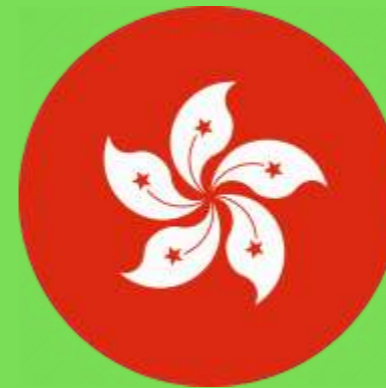
Aoltec Int'l Inc.

100%



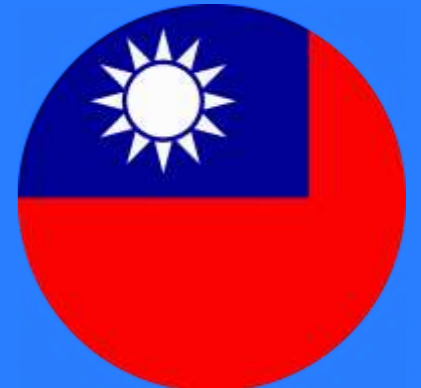
INTAI Japan Corp.

100%



Ever Golden Int'l Ltd.

100%

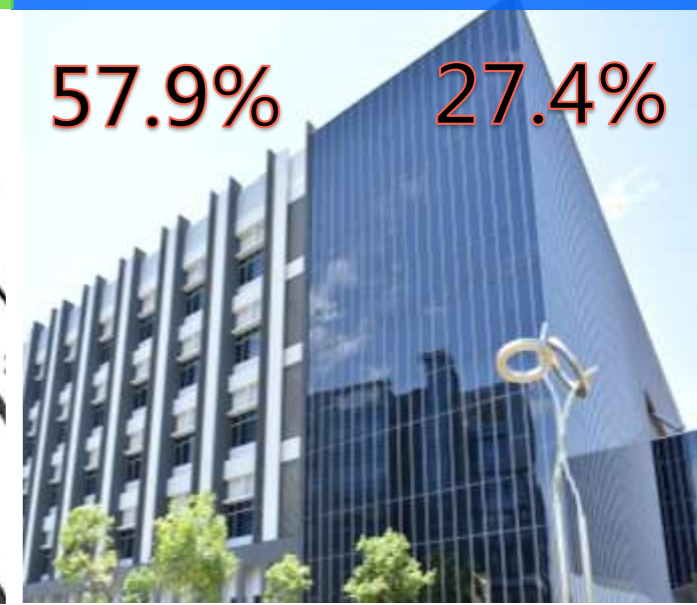


**REMEX
Medical Corp.**

**WILTROM Co.,
Ltd.**

57.9%

27.4%



Product Categories



Medical
Devices

77%



Precision
Hardware

17%



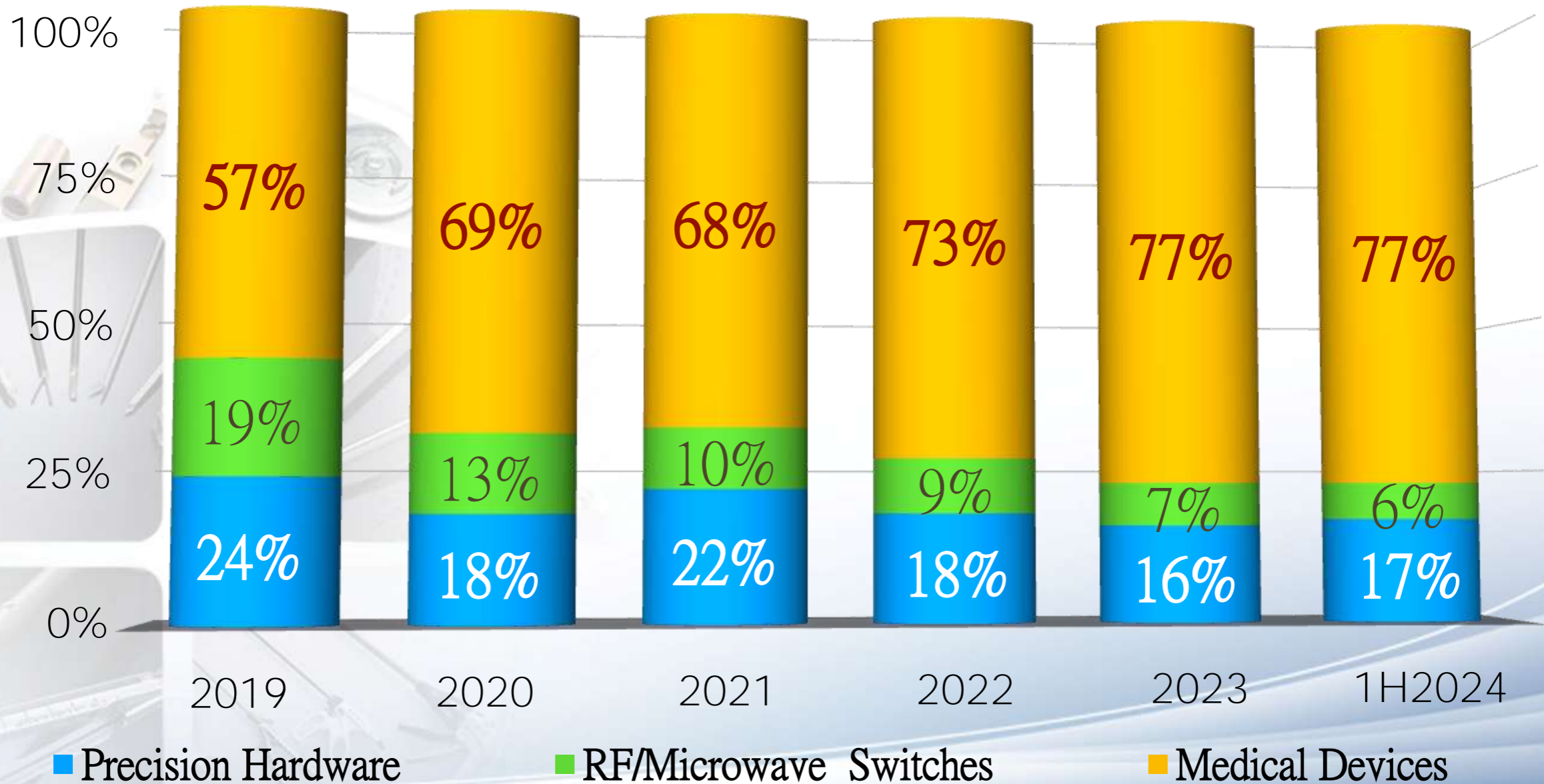
RF/Microwave
Switches

6%



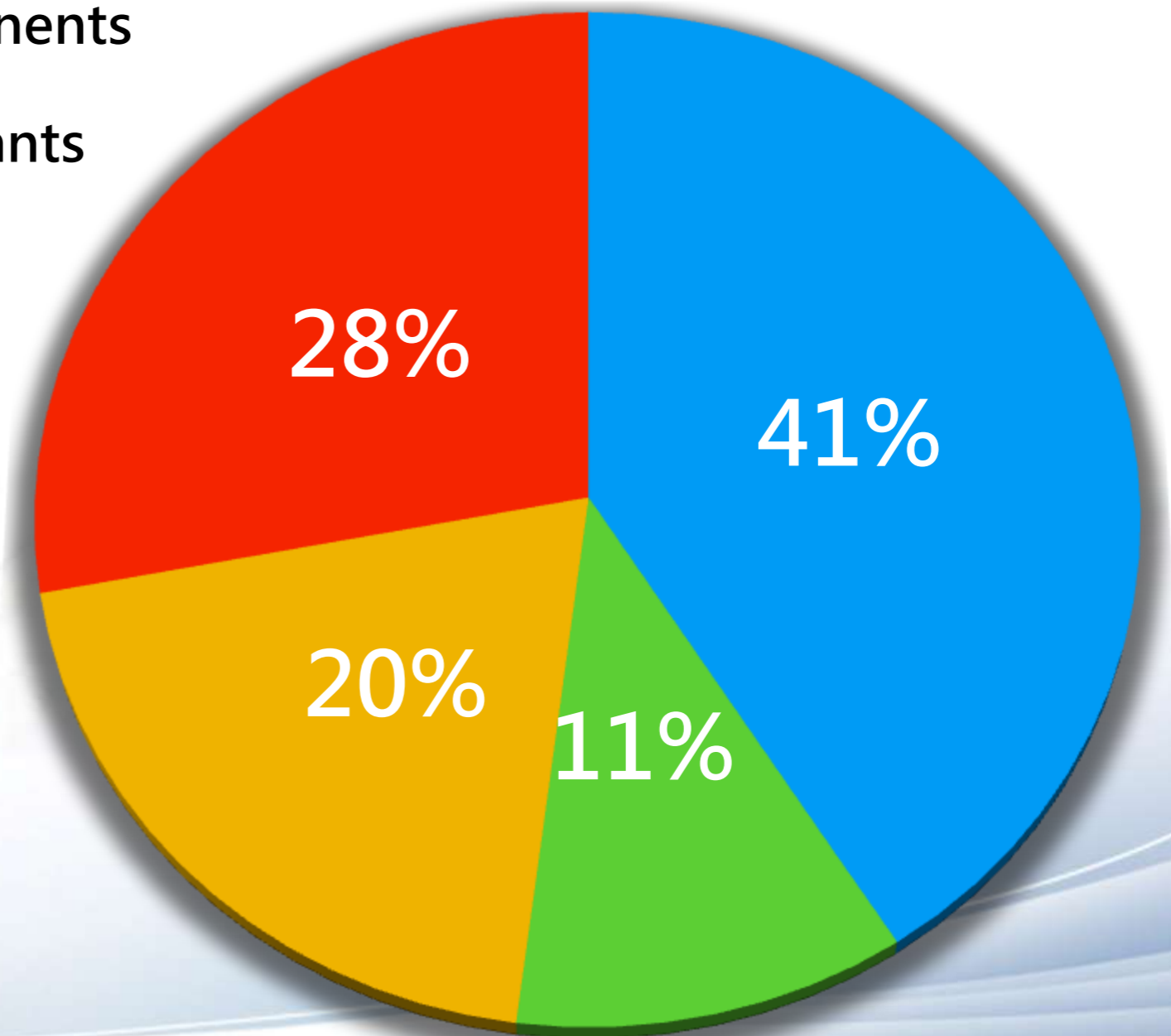
Sales Mix

Sales Percentage by segment



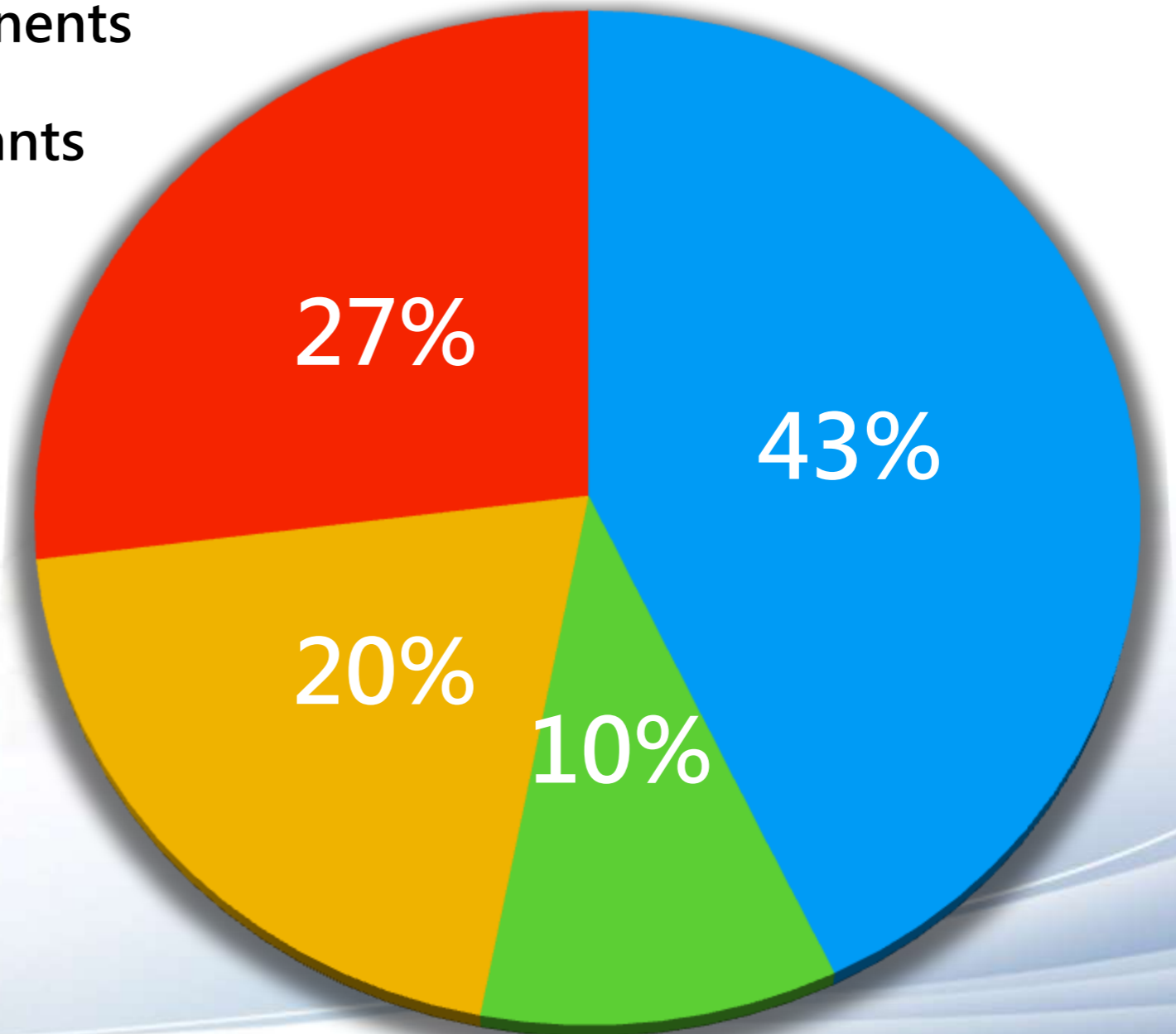
Sales Mix of Medical Category in 1H24

- Minimally-invasive surgery(MIS) device components
- Open surgery device components
- Orthopedic and dental implants
- Others



Sales Mix of Medical Category in 1H23

- Minimally-invasive surgery(MIS) device components
- Open surgery device components
- Orthopedic and dental implants
- Others



Application for Medical Devices



Medical
Devices



Medical Devices – Product Development

OBM

Dental implants

MIS navigation system
for spinal surgery

Orthopedic implants

MIS Cage/ MIS pedicle Screw



Laparoscopy
Breast-care
Cardiovascular



Application for Precision Hardware



Precision
Hardware



Core Competence in Precision Mfg. Processes

CNC MACHINING SHOP



LASER WELDING LINE



Electro-chemical machining



WIRE EDM



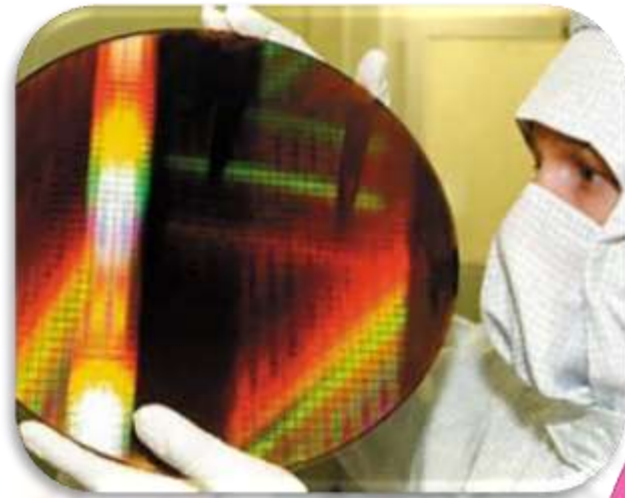
PLASTIC INJECTION MOLDING



Metal Injection



Application for RF/Microwave Switches



RF/
Microwave
Switches



RF/Microwave Components

Radio Frequency MicroWave



Quality Certifications



Medical Devices Market Analysis

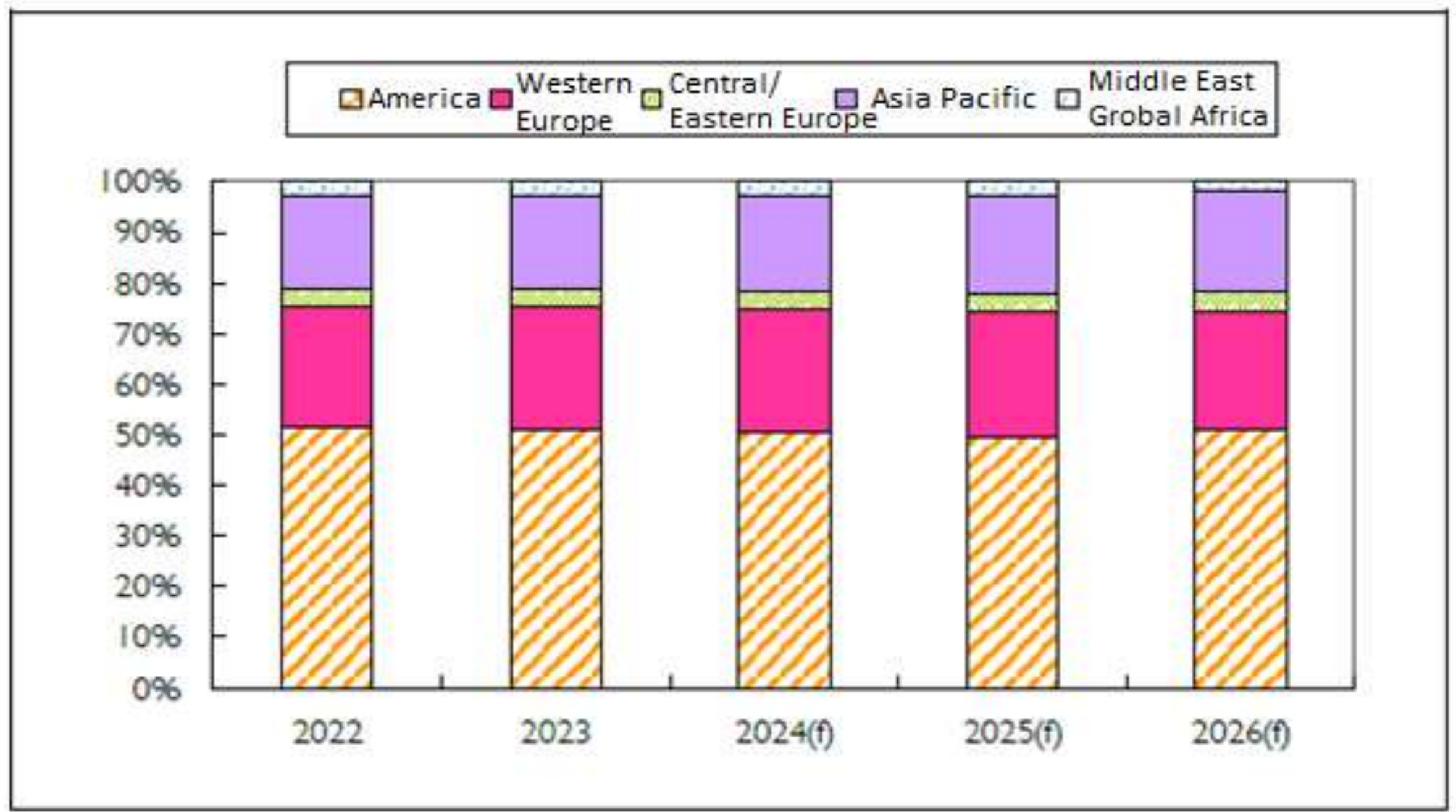
2022-2026 Global medical devices market size forecast



Source: BMI Research (2024/04); IEK ITIS (2024/05)

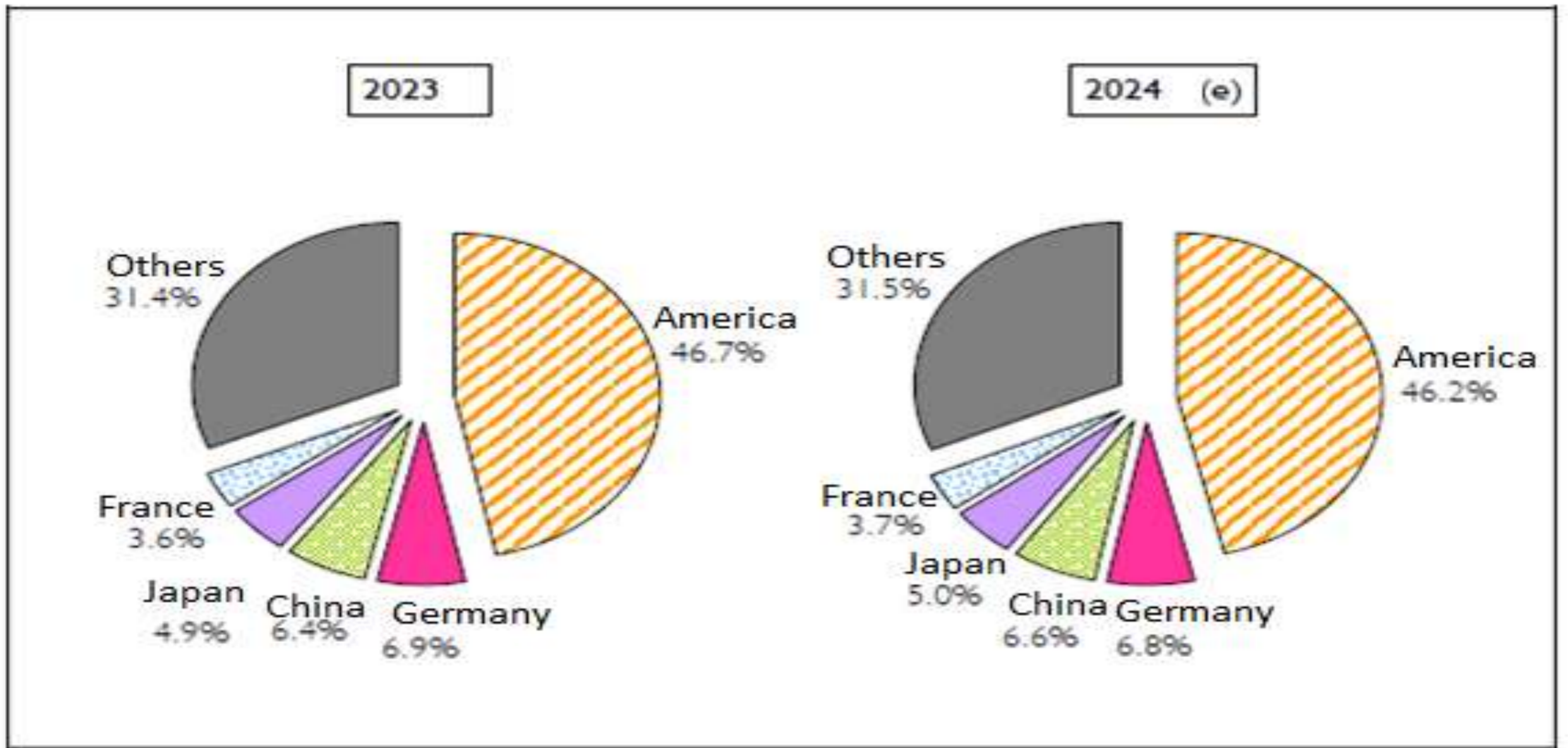
Medical Devices Market Analysis

2022-2026 Global medical device market forecast analysis



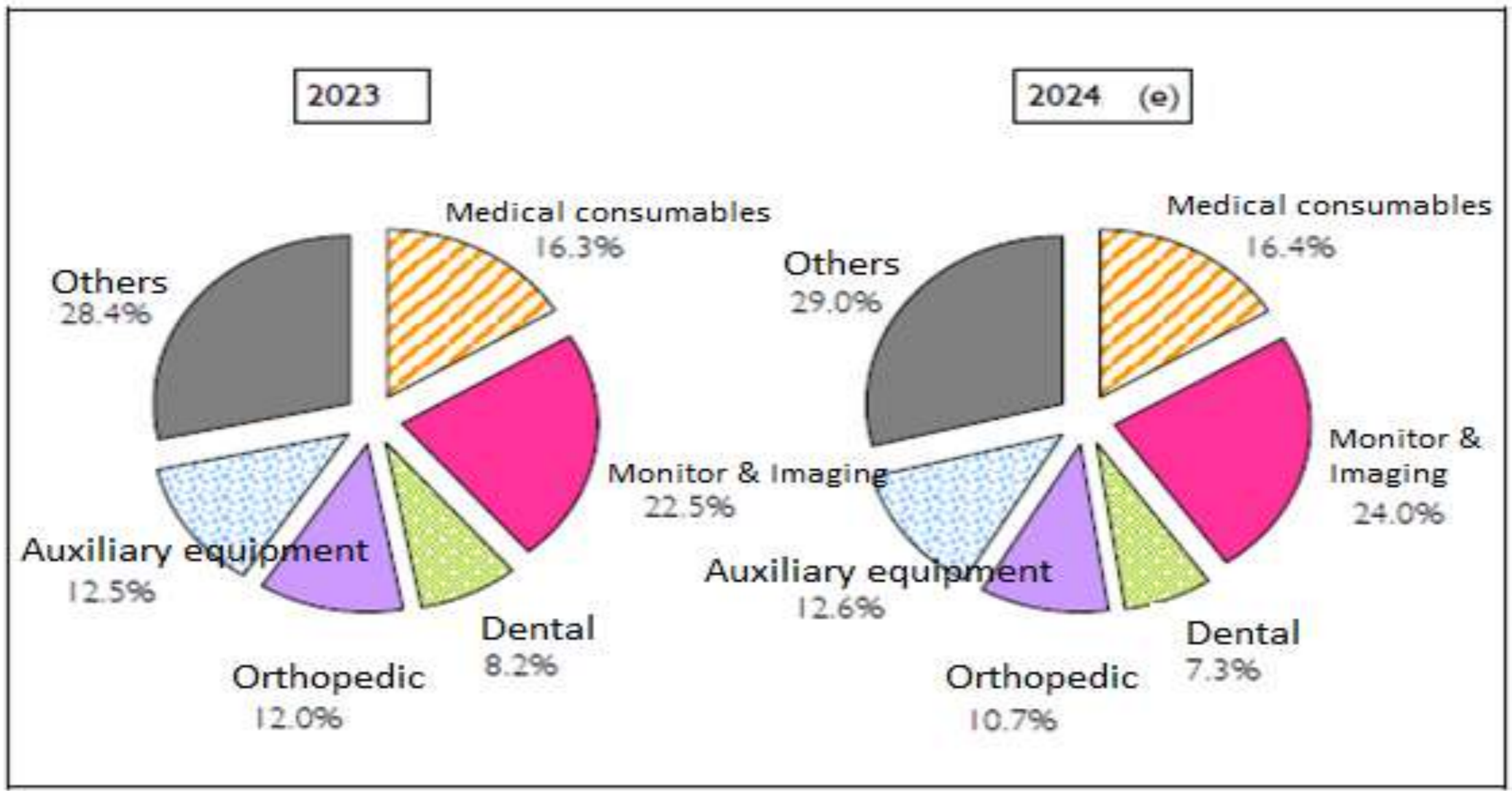
Medical Devices Market Analysis

Analysis of the proportion of medical equipment market in each country in the global market



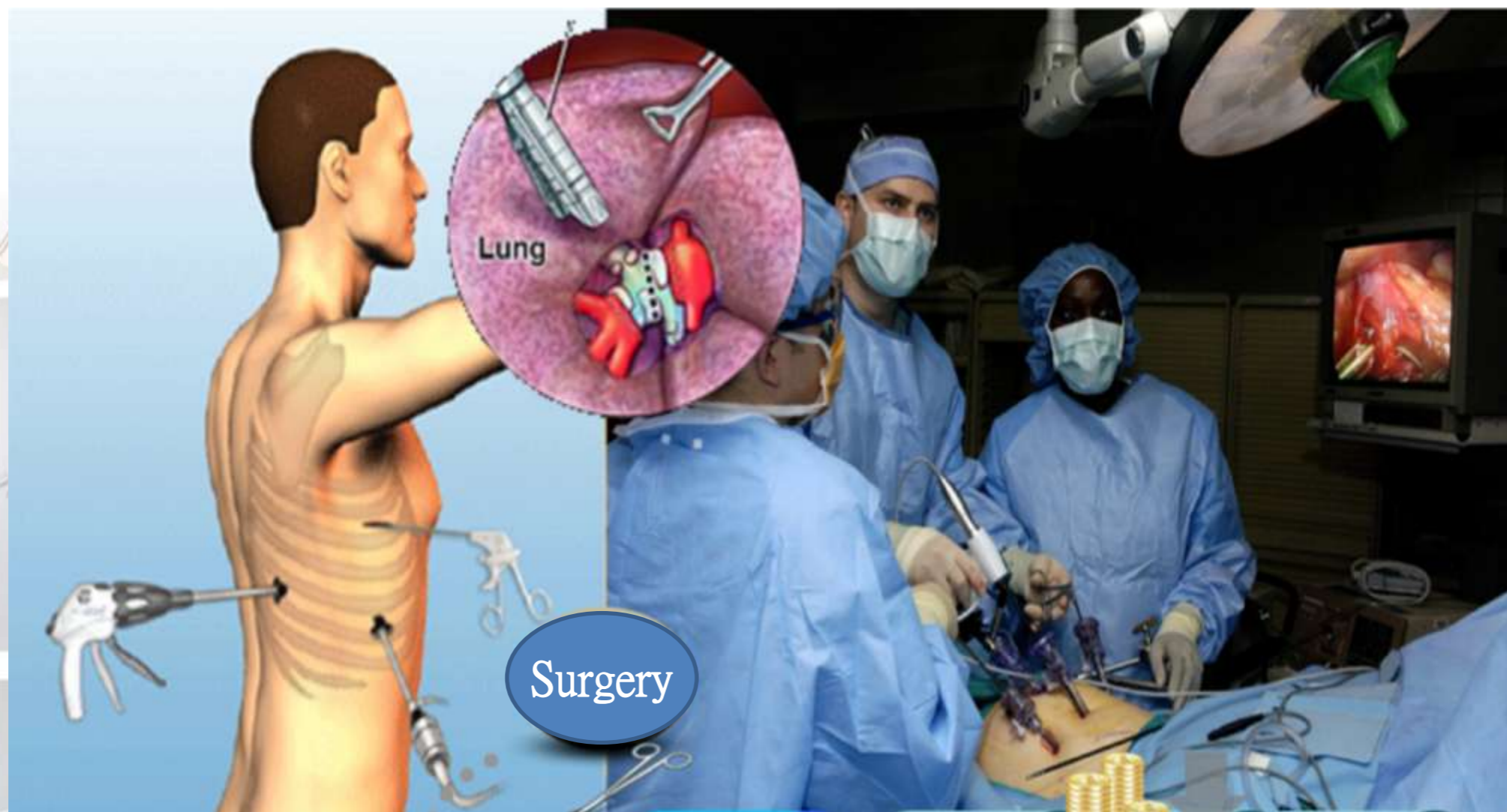
Medical Devices Market Analysis

Analysis of the proportion of global medical equipment sales by product



Medical Devices Market Analysis

Global Trend for Surgery from Open to Minimally Invasive



Smaller wound

Less complications

Reduce pain

Fast recovery

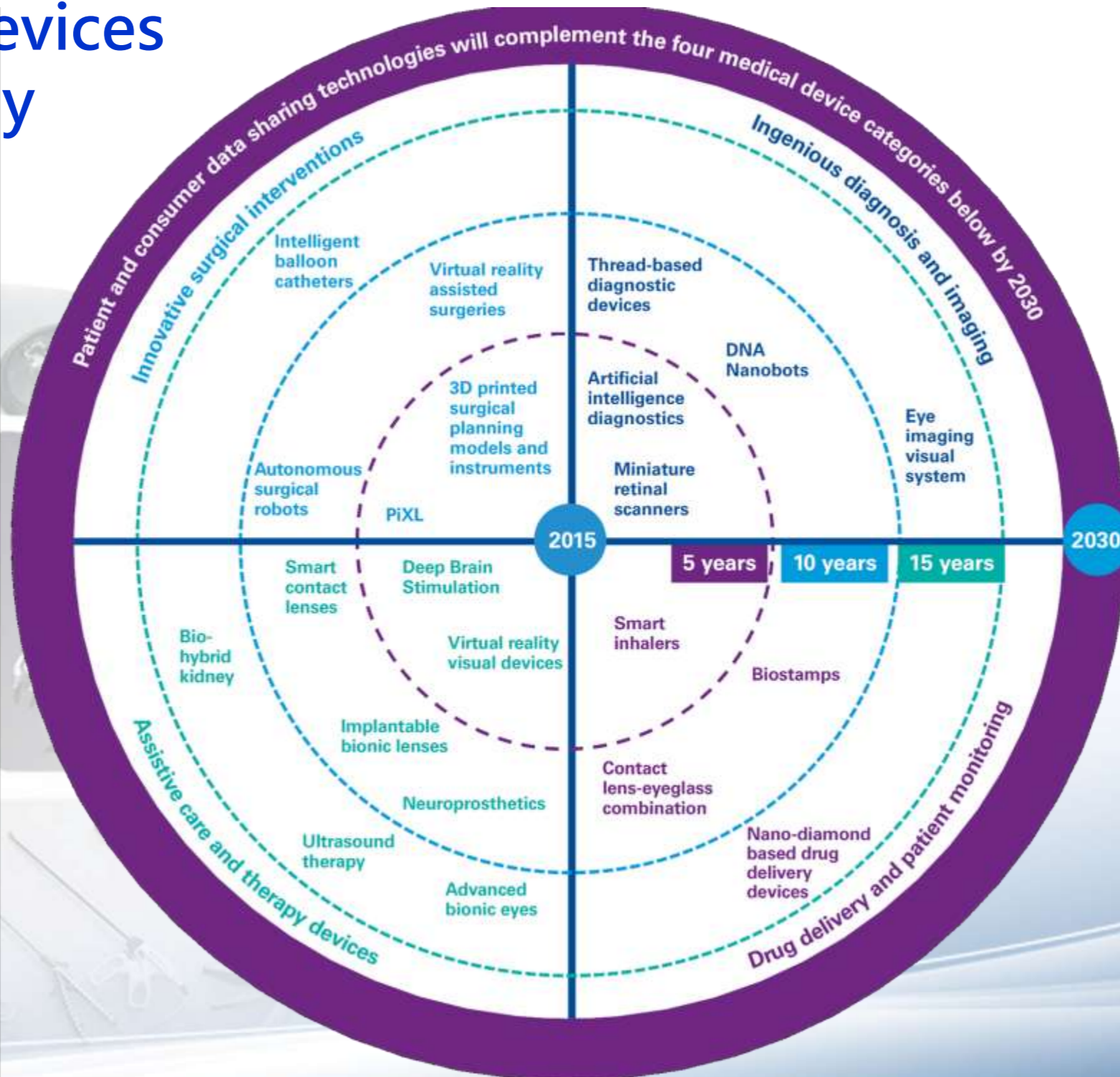
Higher safety

Shorter hospitalization

Cost saving

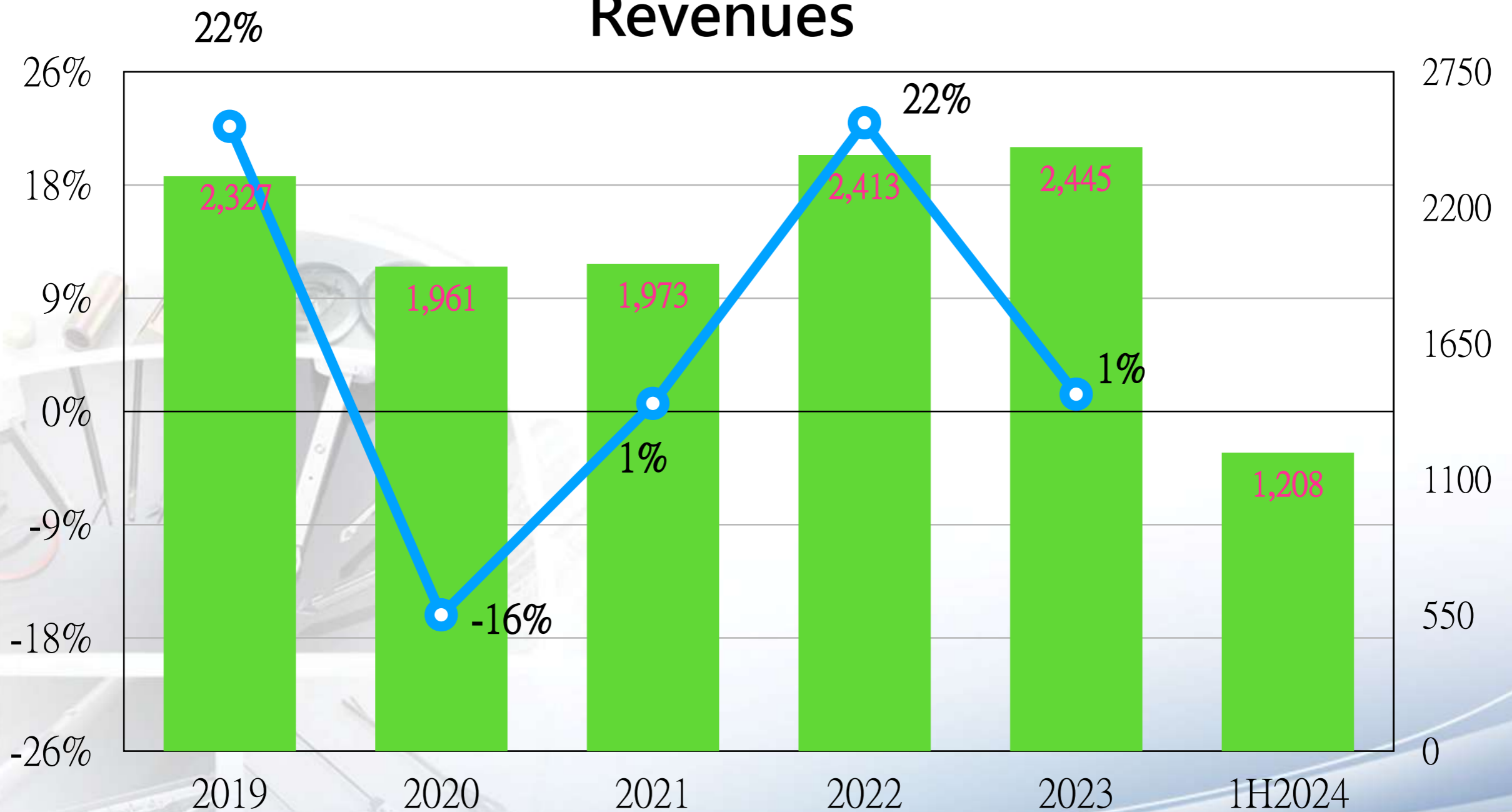
Medical Devices Market Analysis

Medical Devices Technology Roadmap



Financial Highlights

Revenues

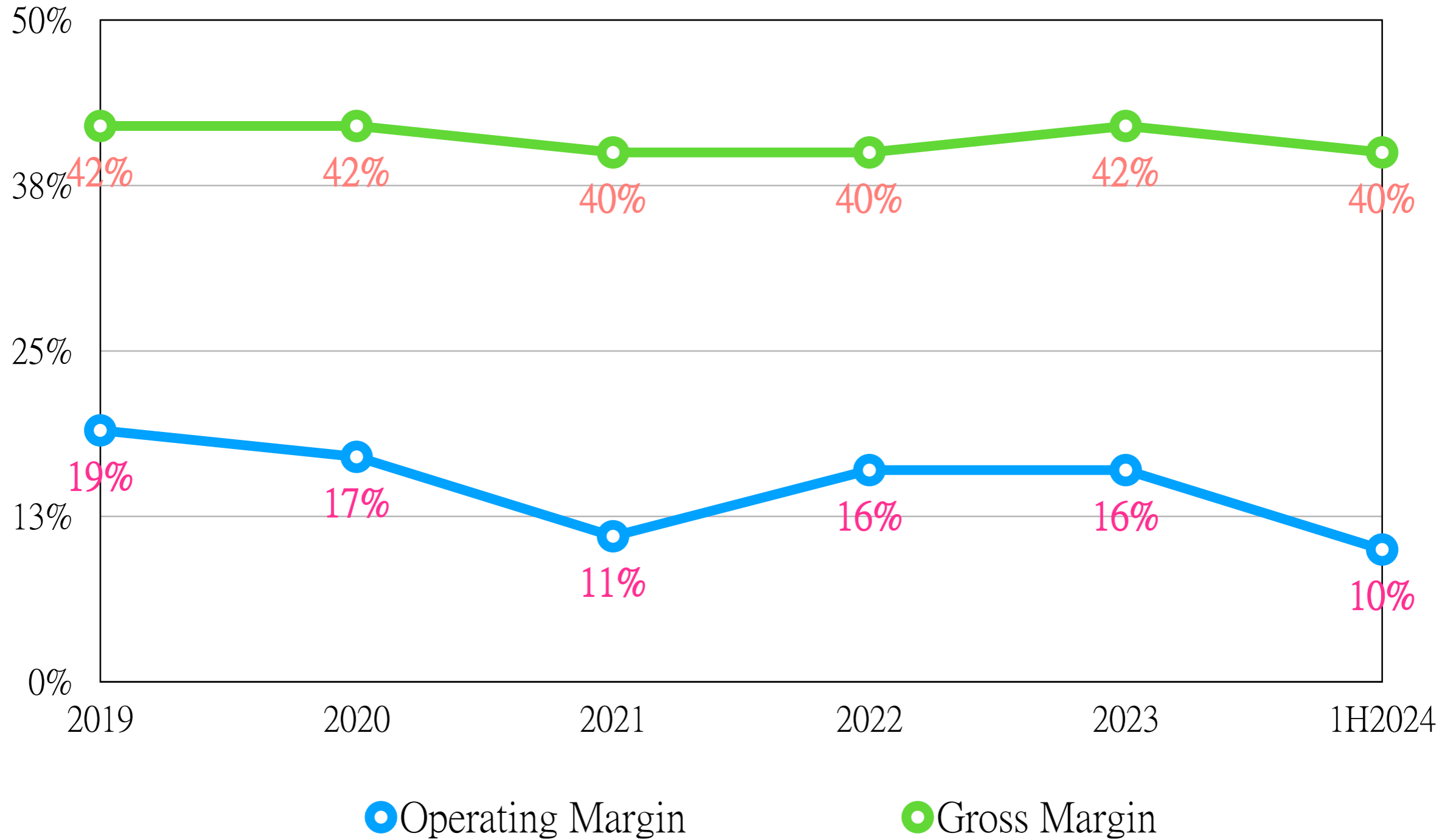


■ Revenue(NT\$ mn)

● Growth YoY

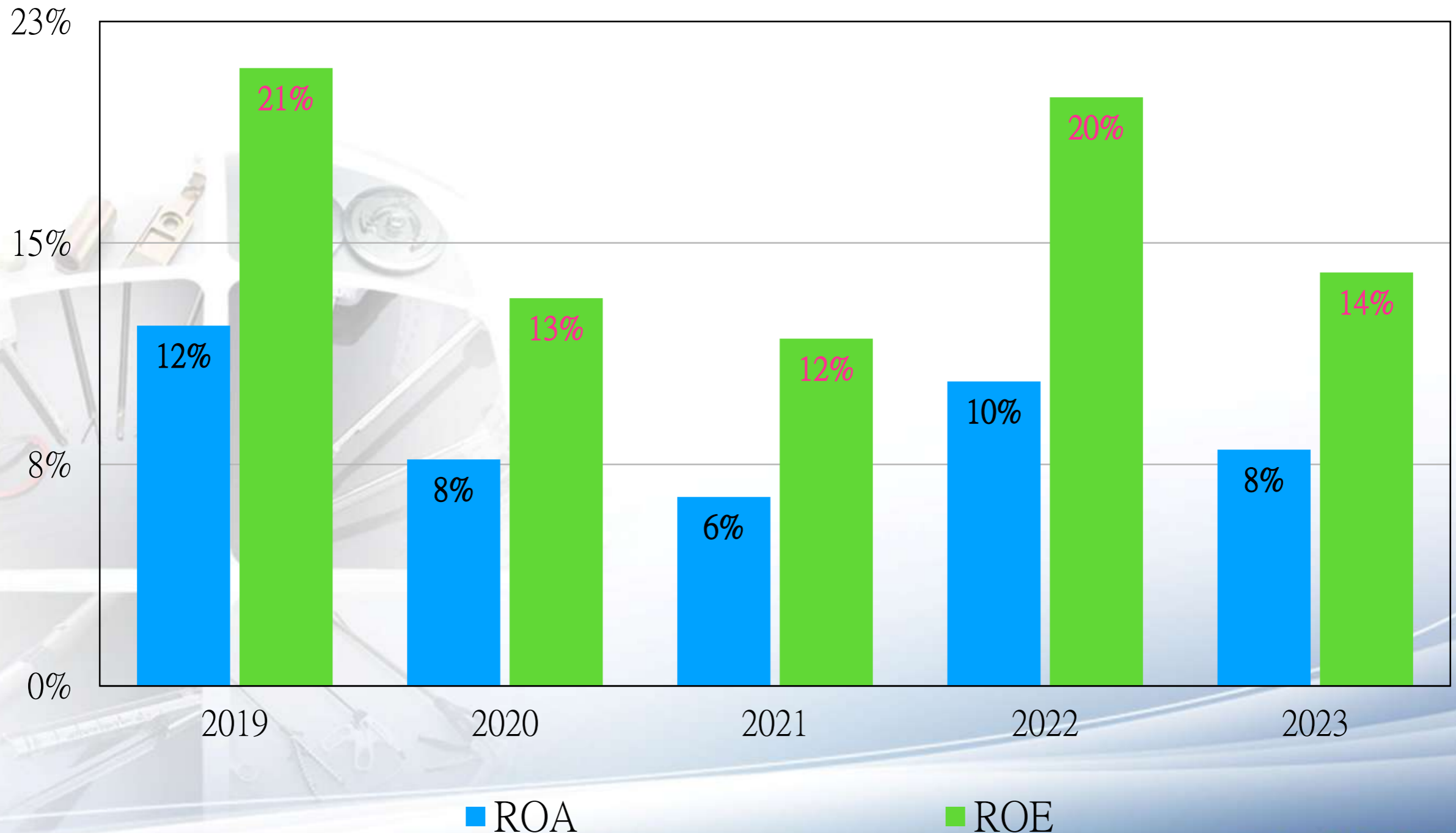
Financial Highlights

Margins



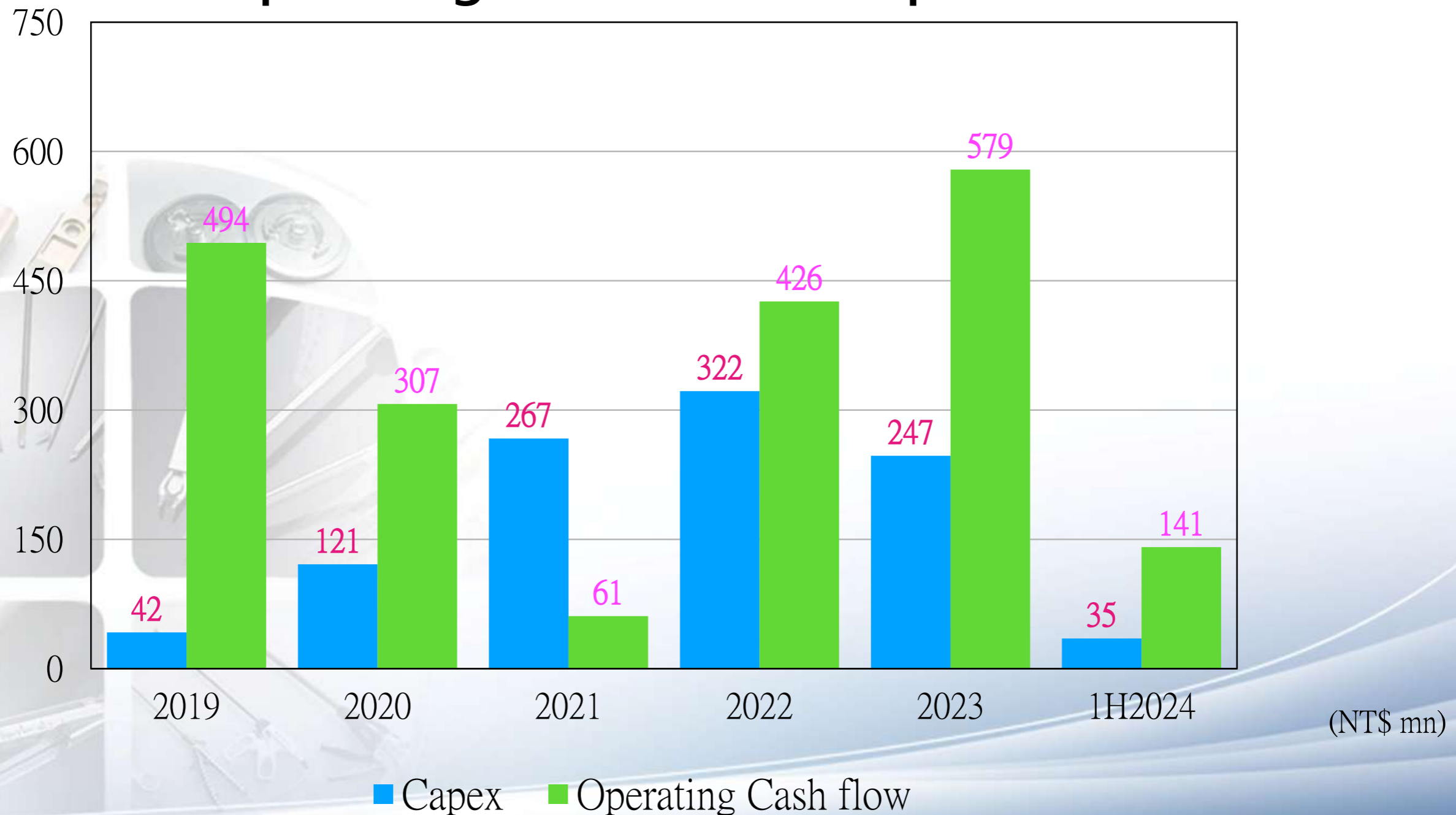
Financial Highlights

ROE & ROA



Financial Highlights

Operating Cash flow & Capex



Dividend Policy

Year	2019	2020	2021	2022	2023
EPS(NT\$)	9.05	5.11	4.73	8.75	7.05
Cash dividend (NT\$)	5.0	3.5	2.5	4.0	3.5
Payout ratio(%)	55.2	68.5	52.9	45.7	49.6
Dividend yield(%)	3.6	4.0	3.0	3.0	2.9

- Dividend yield is based on the closing price on the day before the ex-dividend Date.

A photograph of three surgeons in blue scrubs and masks, focused on a patient in an operating room. The scene is dimly lit, with the primary light source being the surgical lamps. In the background, a medical monitor displays '00:00:00' and other data.

All Technologies, Entirely Your Way

A collage of four images showing various surgical instruments, including forceps, scalpels, and retractors, arranged in a grid.

Thank You!