



TWSE : 4163



Intai Technology Corp.

Aug. 2019

Agenda

- **Company overview**
- **Product categories**
- **Medical device market**
- **Financial highlights**

Company overview



Founded

2004/10



Chairman

Tsai Yung-Fang



Registered capital

NT\$402 mn



HQs & facilities

Taichung (Taiwan)



Product

Medical devices
Precision Fasteners
Radio frequency &
microwave switches



Employee

665人
(Jun 30, 2019)

Corporate structure



Aoltec Int'l Inc.



34.5%

100%

Wiltrom Co.,
Ltd.

Real Time
Surgical Corp.



Ever Golden Int'l Ltd.

100%

100%



Product categories



Medical devices

53%



Precision Fasteners

31%



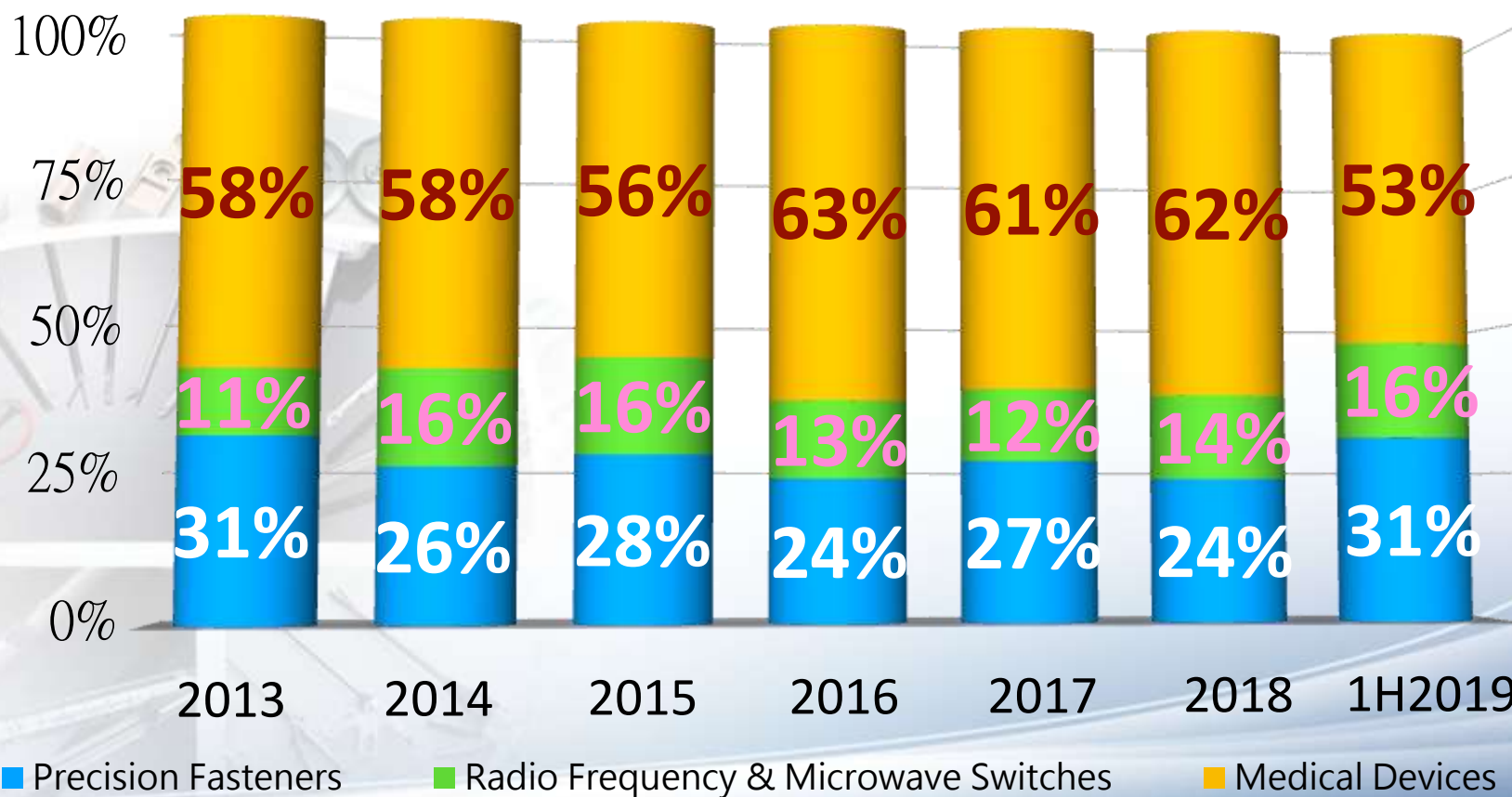
Radio Frequency & microwave switches

16%



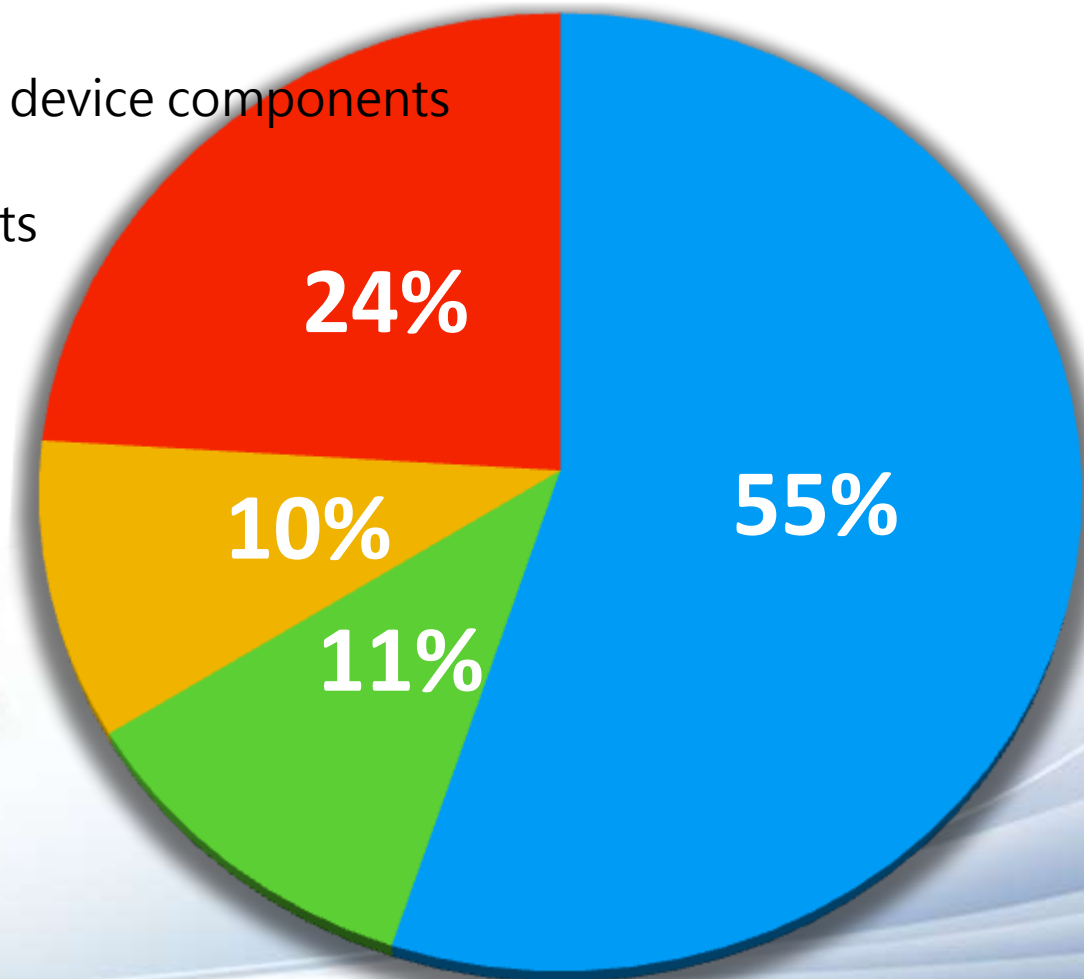
Product categories

Sales Percentage by segment



Sales mix of medical segment in 1H19

- Minimally-invasive surgery(MIS) device components
- Open surgery device components
- Orthopedic and dental implants
- Others



Medical devices



Medical
Device



Medical devices- Development

OBM

Dental implants

MIS navigation system
for spinal surgery



Orthopedic implants

MIS Cage/ MIS pedicle Screw



ODM

OEM

Precision fasteners



Precision fasteners



Precision fasteners-Technical advantages

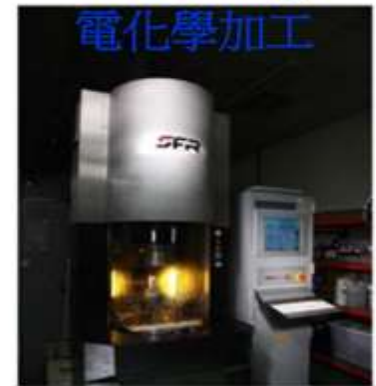
CNC MACHINING SHOP



LASER WELDING LINE 雷射焊接機



Electro-chemical machining



WIRE EDM 線切割放電加工



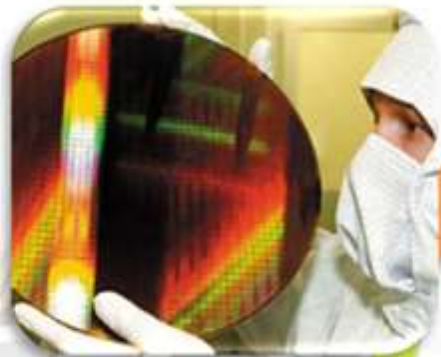
PLASTIC INJECTION MOLDING 塑膠射出成型機



Metal Injection 金屬射出成型



Radio frequency & microwave switches



Radio frequency &
microwave switches



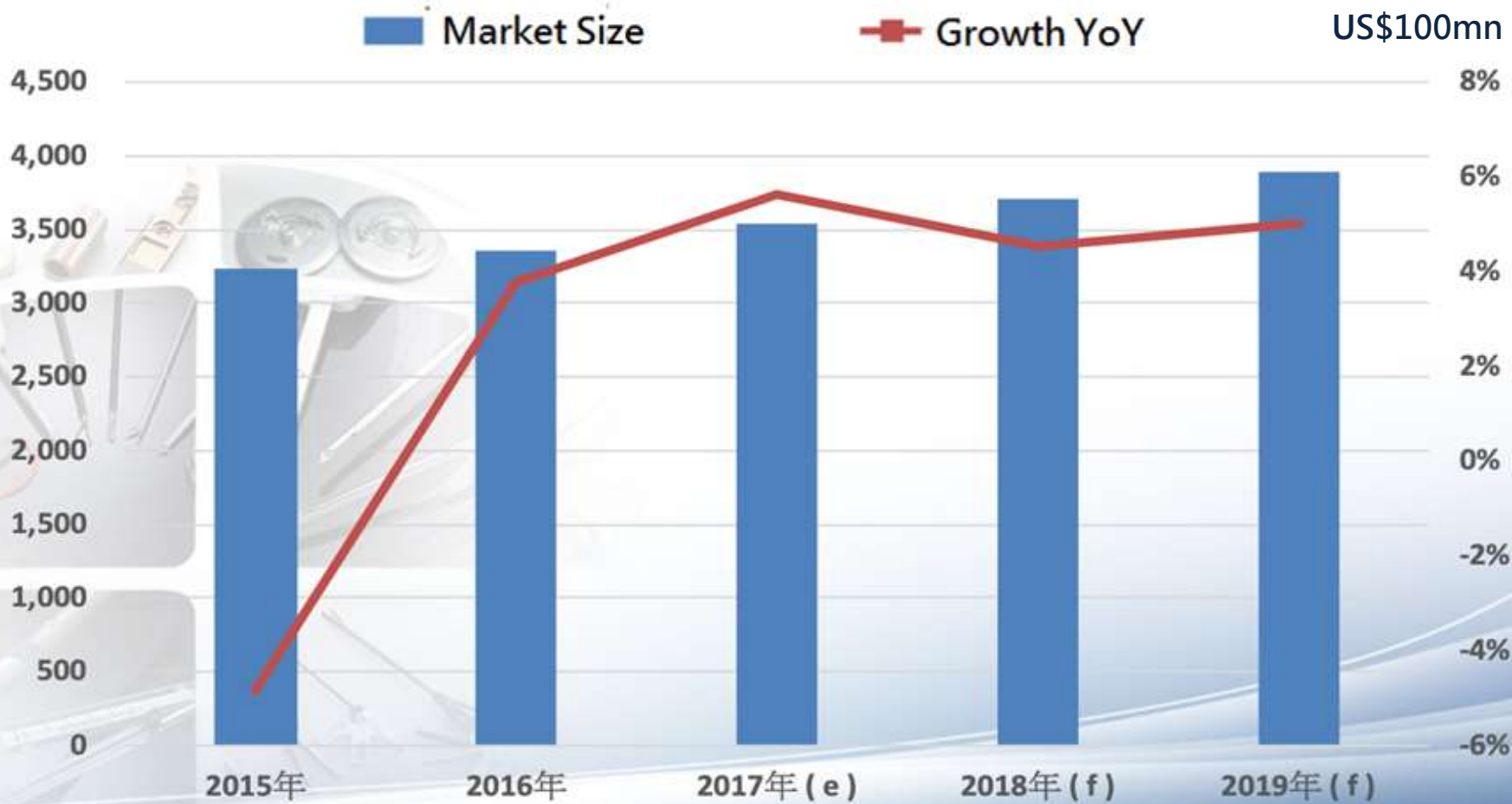
RF-Various components

Radio Frequency MicroWave



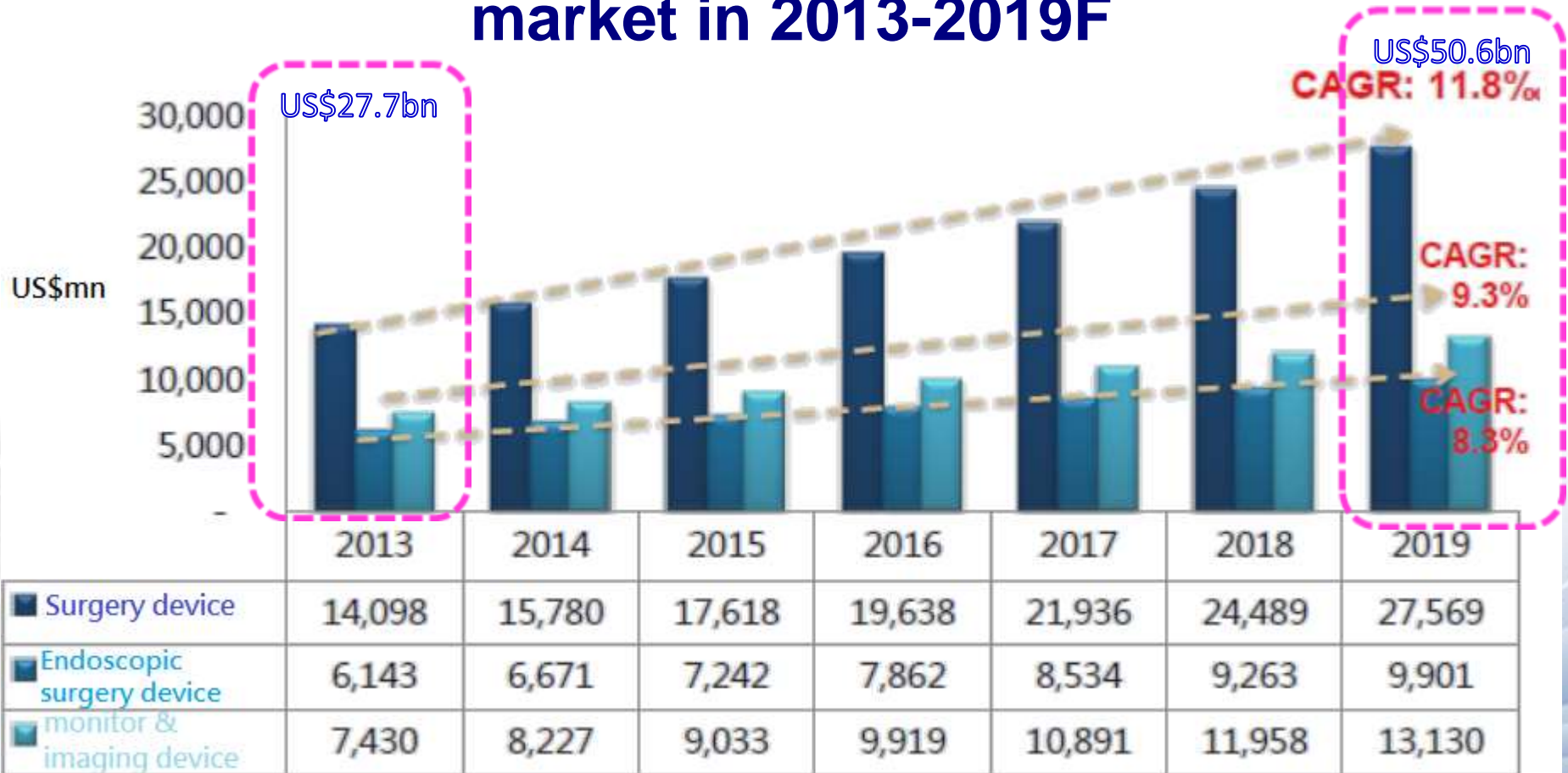
Medical device market

Global medical device market in 2015-2019F



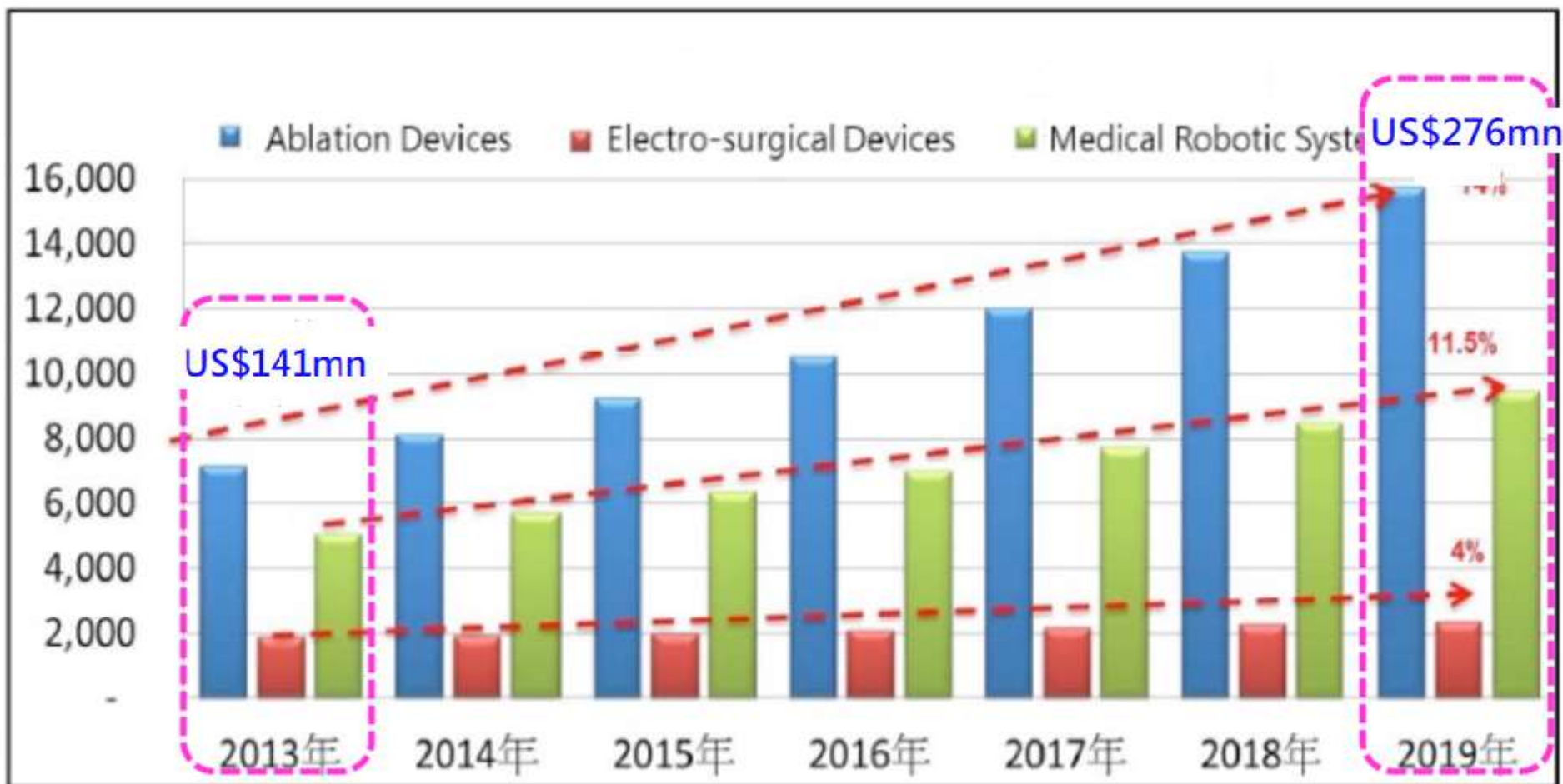
Medical device market

Global minimally invasive medical device market in 2013-2019F



Medical device market

Fastest growing MIS devices in 2013-2019F

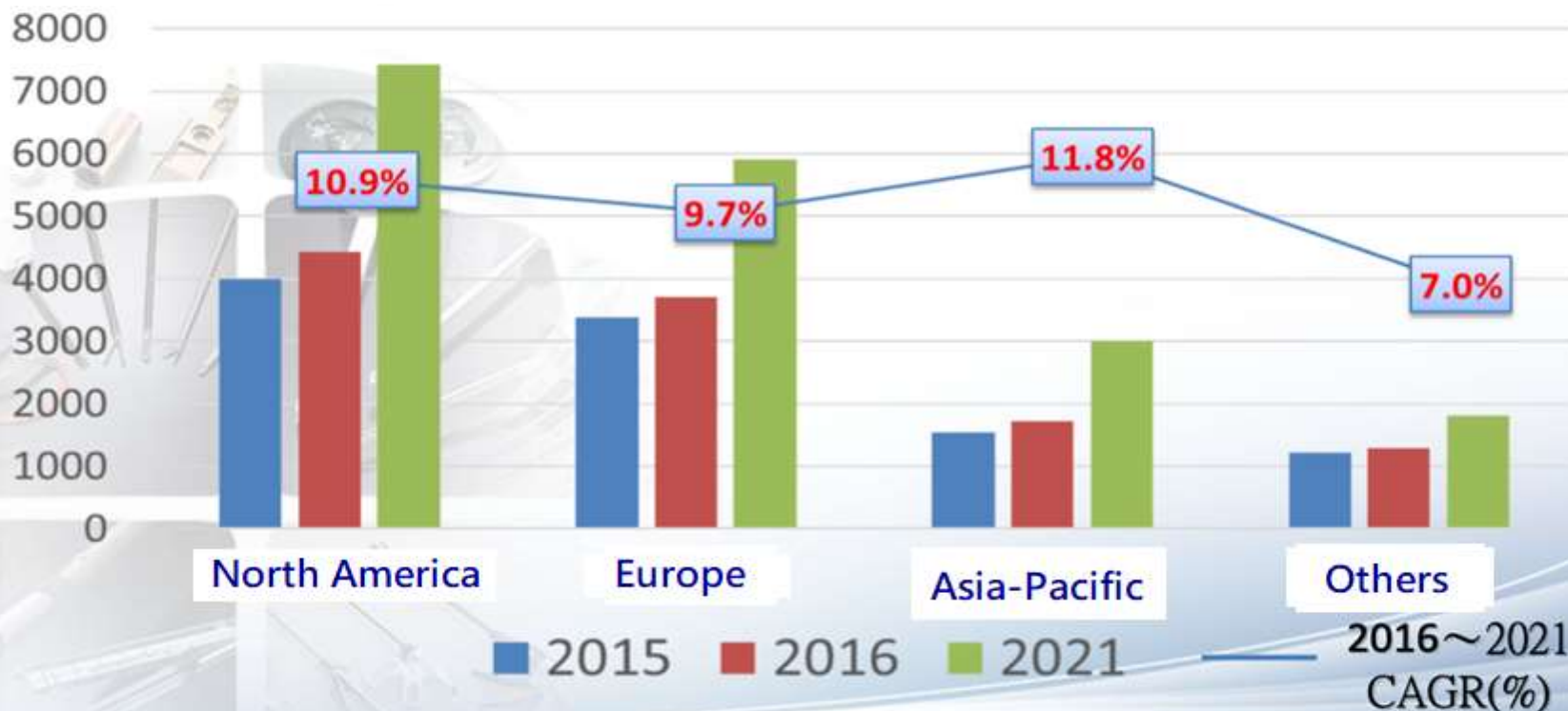


Medical device market

Global minimally invasive medical device market in 2015-2021F

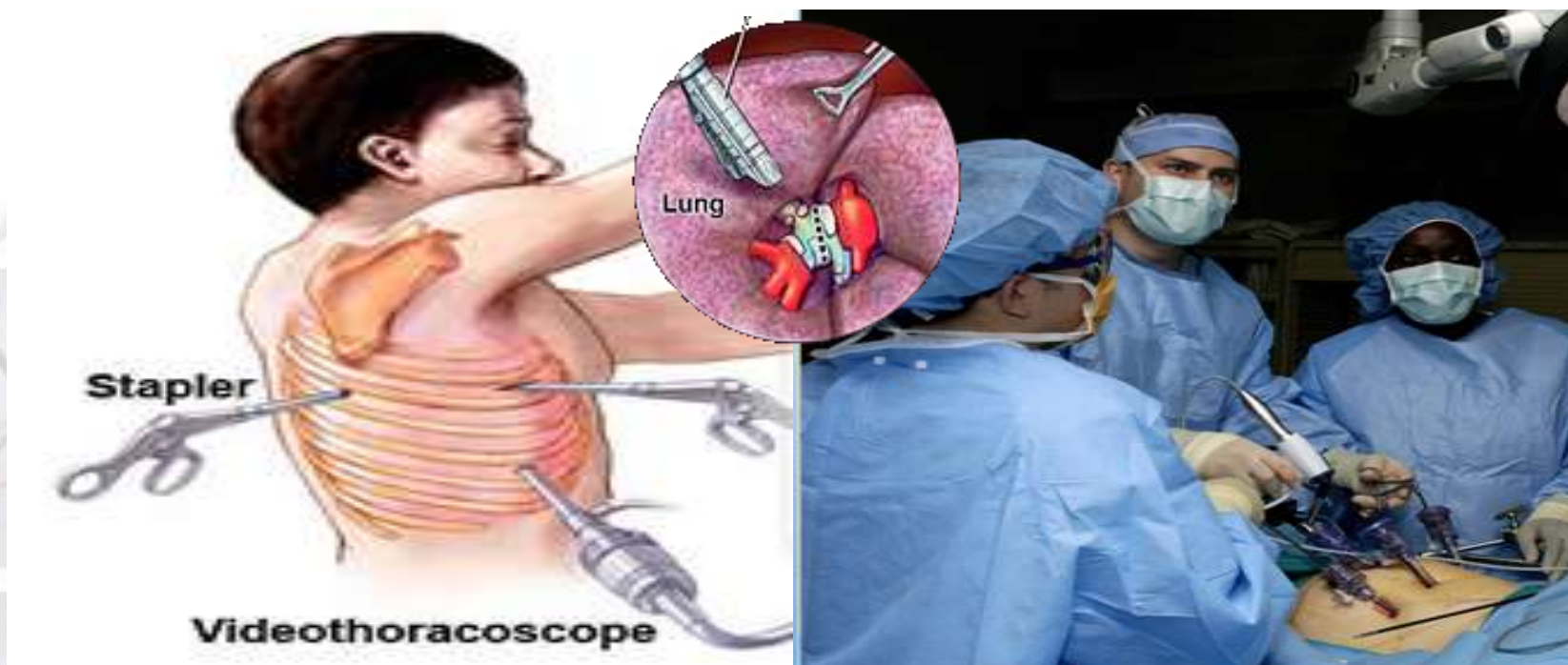
Largest market – North America (CAGR 10.9%)

Greatest potential – Asia-Pacific (CAGR 11.8%)



Financial highlights

Global trend from open surgery to Minimally Invasive Surgery(MIS)



Smaller wound

Less complications

Reduce pain

Fast recovery

Higher safety

Shorter hospitalization

Cost saving

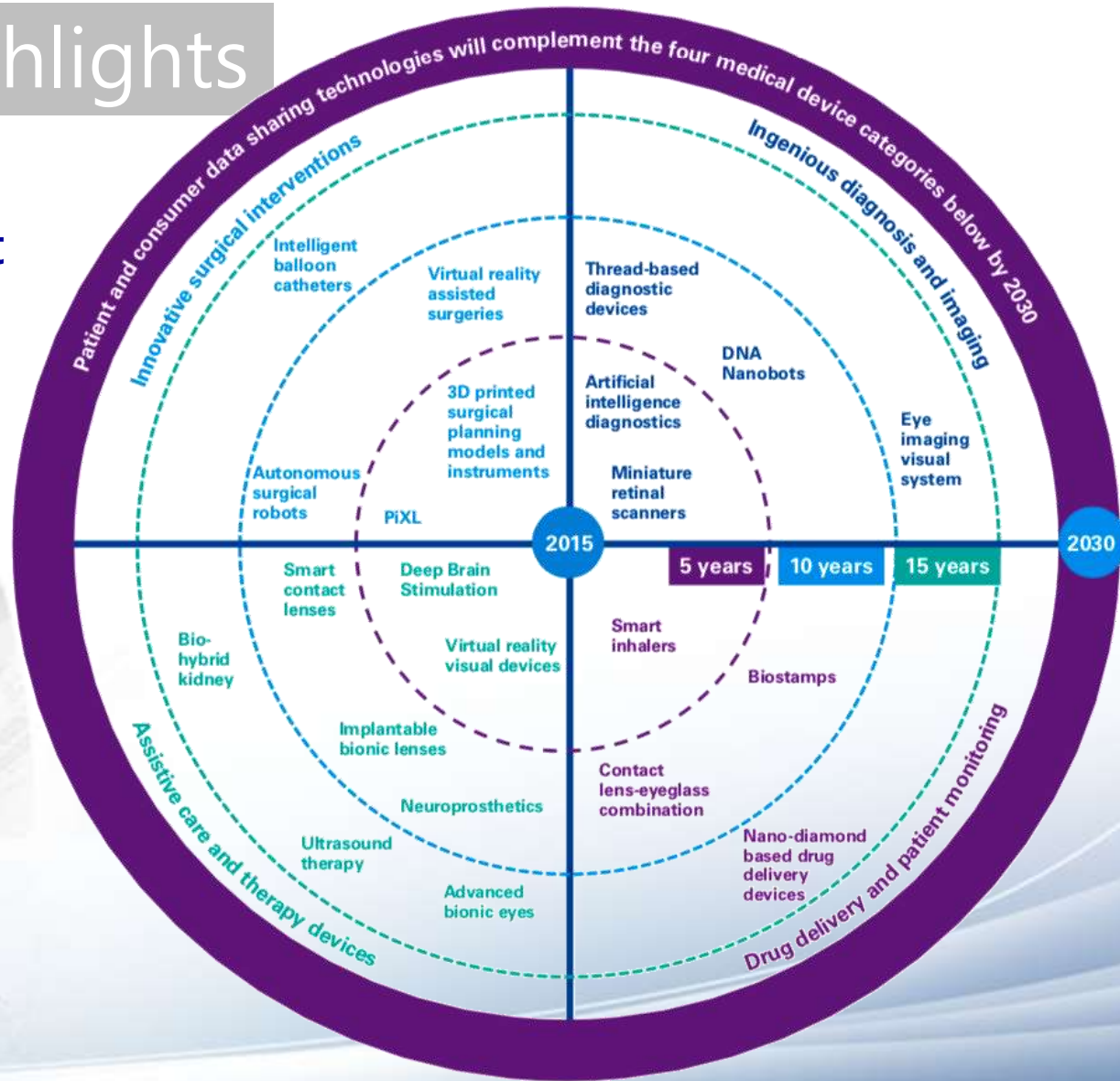
Financial highlights

The top ten mergers and acquisitions of the global medical industry in 2015

| 收購 / 出資 | 被收購方 | 交易金額 (十億美金) |
|----------------------|--|----------------|
| Medtronic | Covidien | 49.9 |
| Zimmer | Biomet | 14.0 |
| Danaher | Pall | 13.8 |
| Becton Dickinson | CareFusion | 12.2 |
| Cyberonics | Sorin | 3.4 |
| Wright Medical Group | Tornier | 3.3 |
| St.jude Medical | Thoratec | 3.3 |
| EQT Partners | Audiology Solution business of Siemens | 2.7 |
| Hill-Rom | Welch Allyn | 2.1 |
| Cardinal Healthie | Cordis business of J&J | 1.9 |

Financial highlights

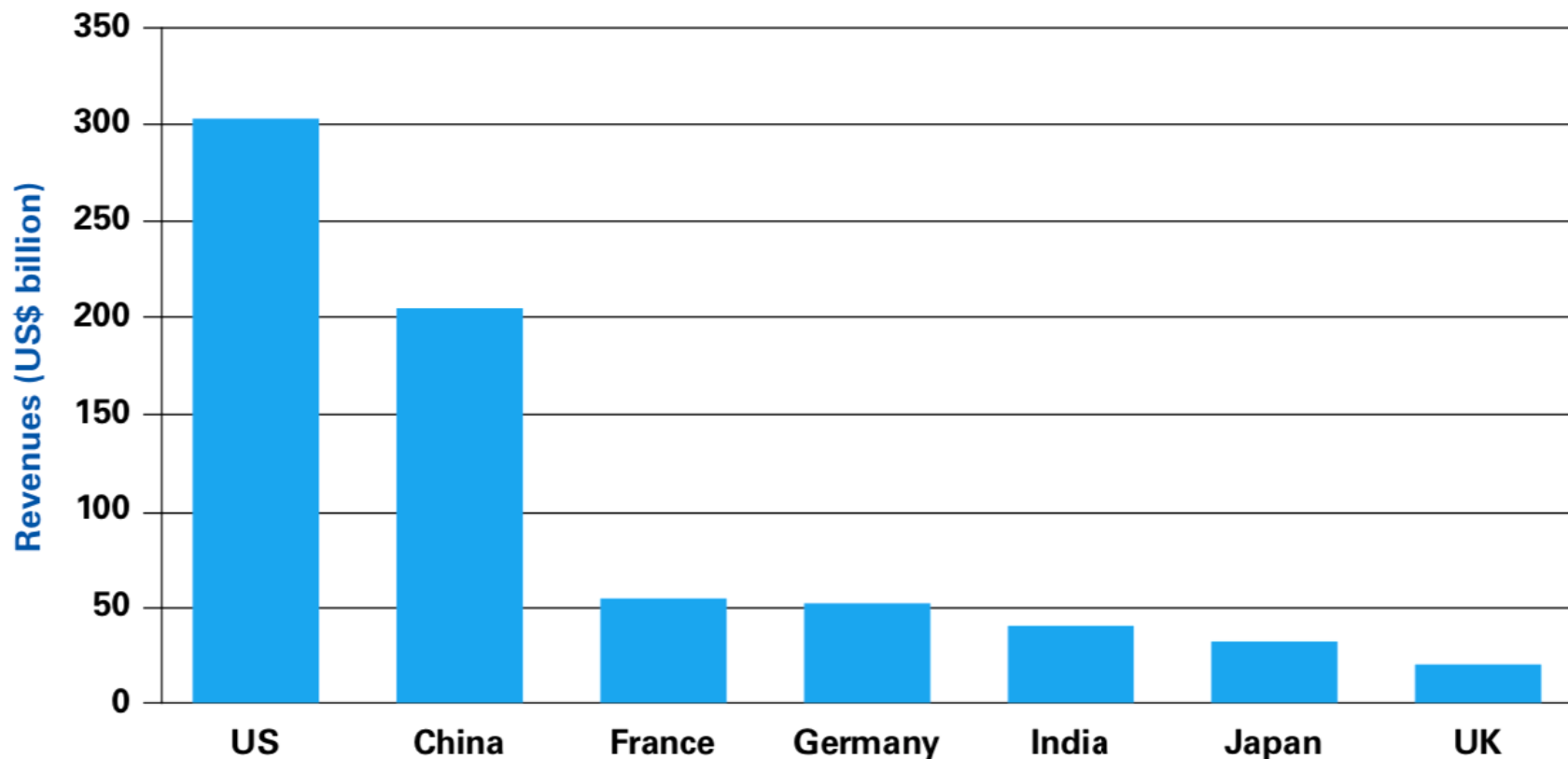
Medical equipment technology development 2015-2030



Source : 2018 KPMG International Cooperative (“KPMG International”).

Financial highlights

2030 global medical equipment market demand forecast



Financial highlights

Revenues

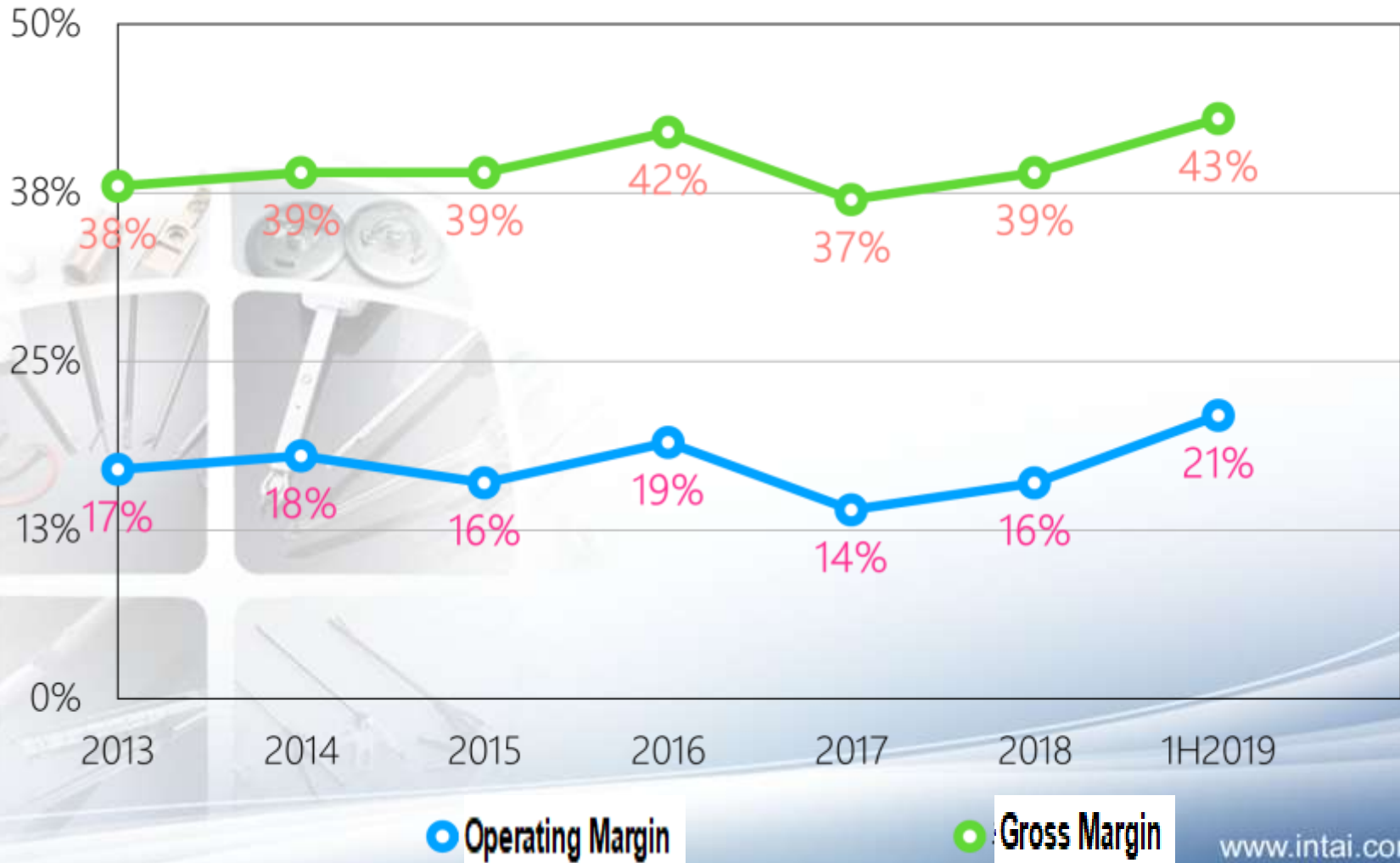


■ Revenue (NT\$ mn)

● Growth YoY

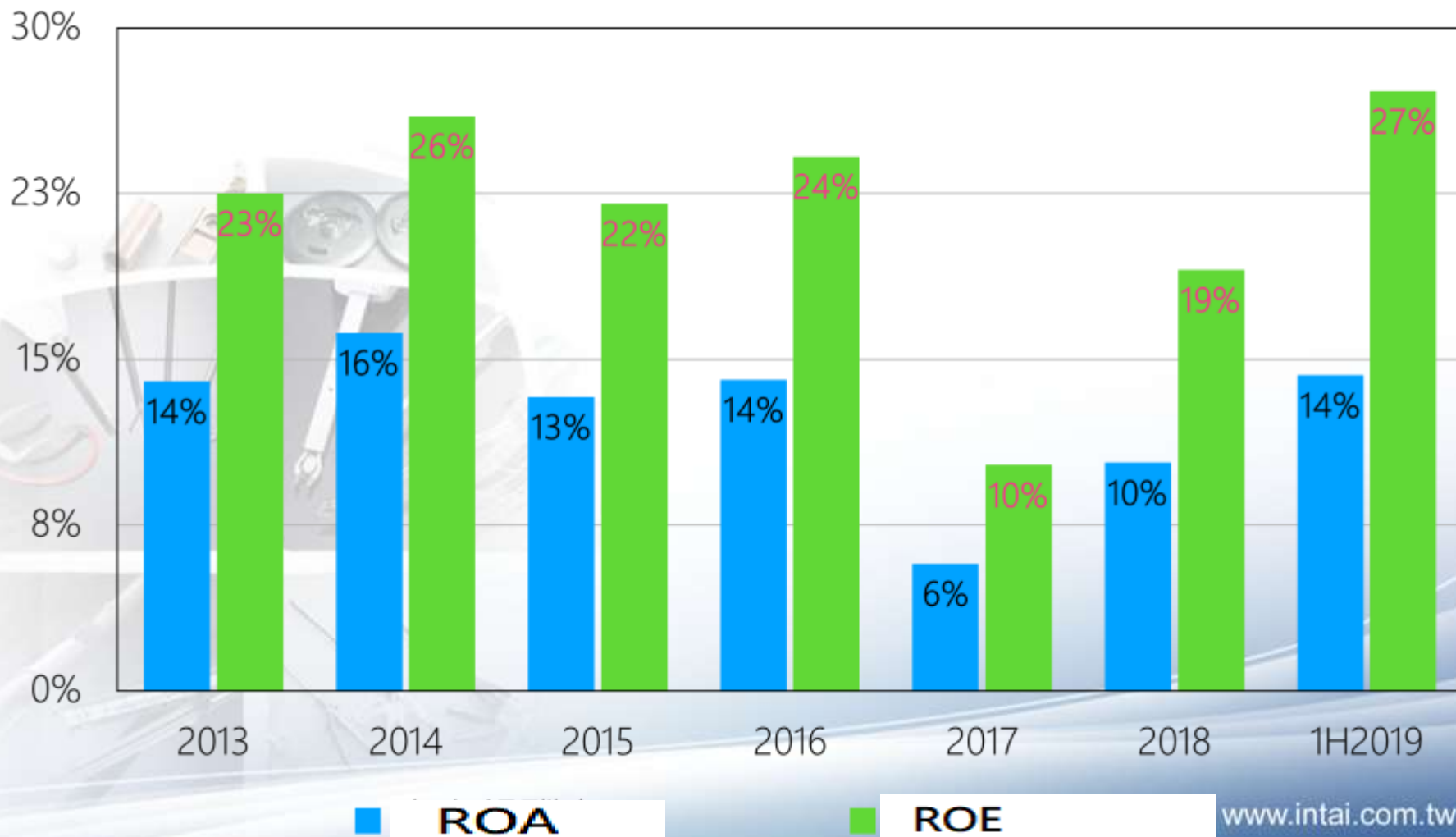
Financial highlights

Margins



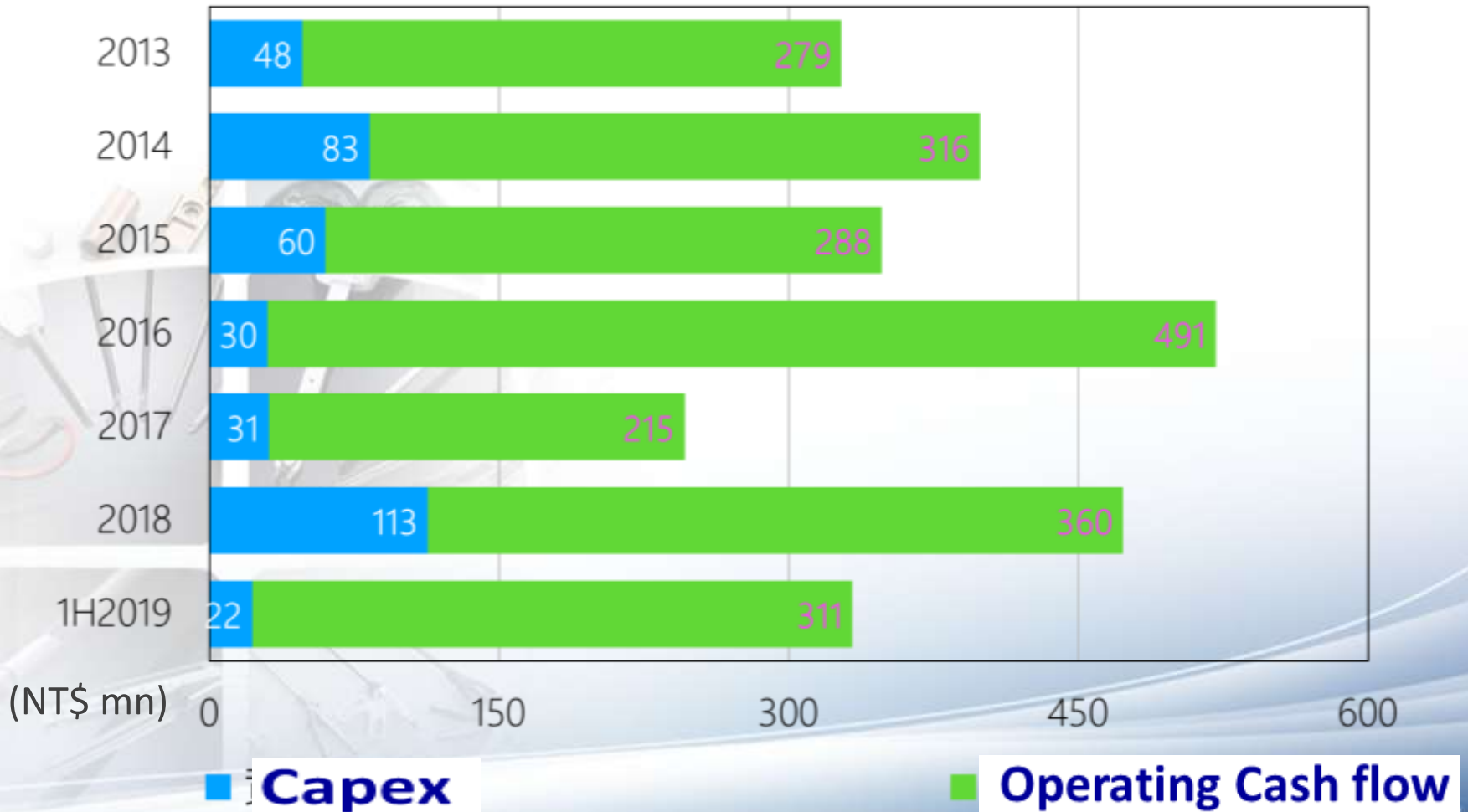
Financial highlights

ROE & ROA



Financial highlights

Operating Cash flow & Capex



Financial highlights

Dividend policy

| Year | 2014 | 2015 | 2016 | 2017 | 2018 |
|----------------------|------|------|------|------|------|
| EPS (NT\$) | 7.87 | 7.31 | 8.75 | 3.77 | 7.25 |
| Cash dividend (NT\$) | 5.0 | 4.5 | 6.0 | 2.3 | 4.5 |
| Payout ratio (%) | 63.5 | 61.6 | 68.6 | 61.0 | 62.1 |
| Dividend yield (%) | 3.7 | 2.3 | 5.4 | 2.2 | 3.0 |

- Dividend yield is based on the closing price on the day before the ex-dividend date.

A photograph of three surgeons in blue scrubs and masks, focused on a surgical procedure in an operating room. The room is dimly lit, with a clock and a monitor visible in the background.

All Technologies, Entirely Your Way

A collage of four images showing various surgical instruments, including forceps, scalpels, and retractors, arranged in a grid pattern. The background is a light blue gradient with a curved white line.

Thank You!